

BEATSTEP PRO

Controller & Sequencer

Dear Musician,

Congratulations on your purchase of Arturia BeatStep Pro. BeatStep Pro is the combination of a pad/knob MIDI controller and a versatile standalone sequencer.

BeatStep Pro can be configured and used in many different ways. We can not list them all here, but we can try and give you a few examples in this quickstart.

Musically Yours,

The Arturia Team

01 | **BEATSTEP PRO AS A
SLAVE IN PRO TOOLS**
— P. 02

04 | **FILTER INPUT
MIDICHANNEL** — P. 05

02 | **SET PRO TOOLS AS A
MIDI CLOCK SLAVE**
— P. 04

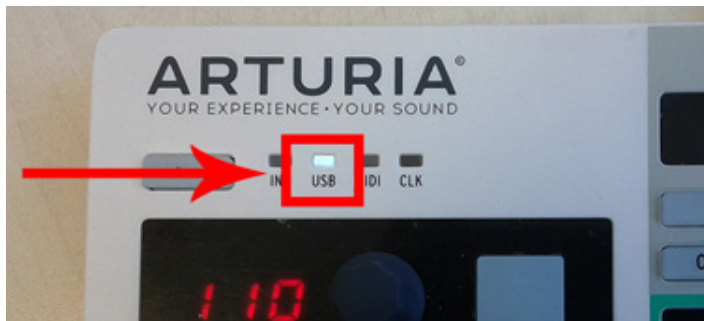
05 | **HUI CONTROL** — P. 05

03 | **SET UP PRO TOOLS
TRANSPORT CONTROL**
— P. 04

1. BEATSTEP PRO AS A SLAVE IN PRO TOOLS

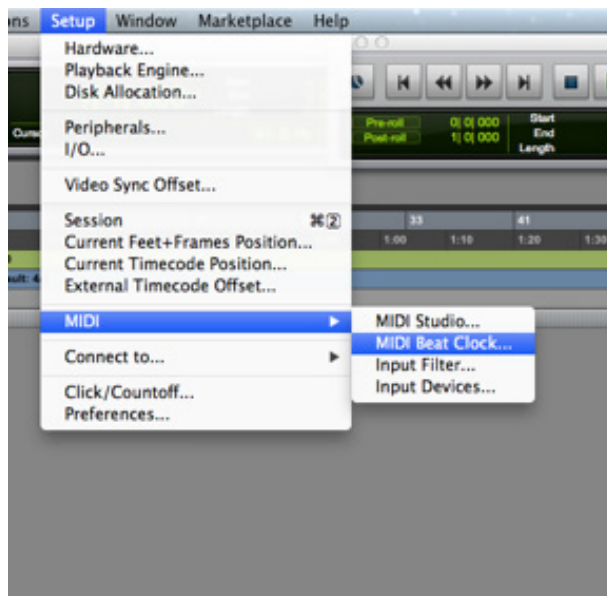
First Step

First, to make sure the Beatstep Pro will play at the same tempo as Pro tools, and will respond to Start & Stop messages, set the “Sync” mode to “USB”.

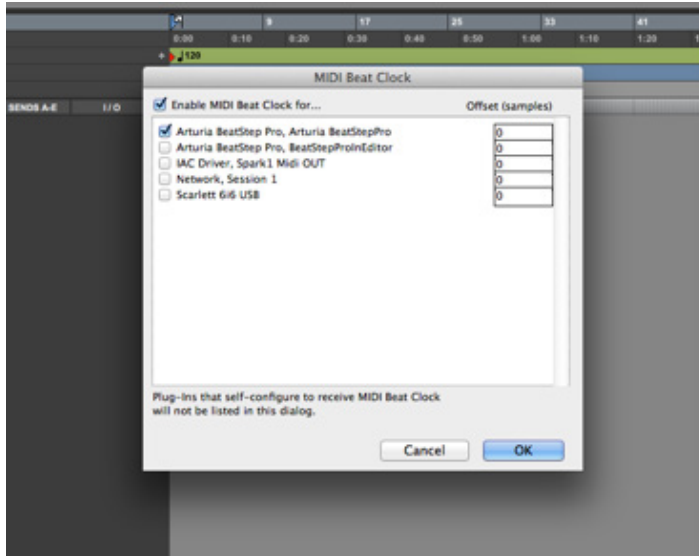


Second Step

Open Horloge MIDI Beat window from the Setup menu.



Then choose Arturia BeatStep Pro.



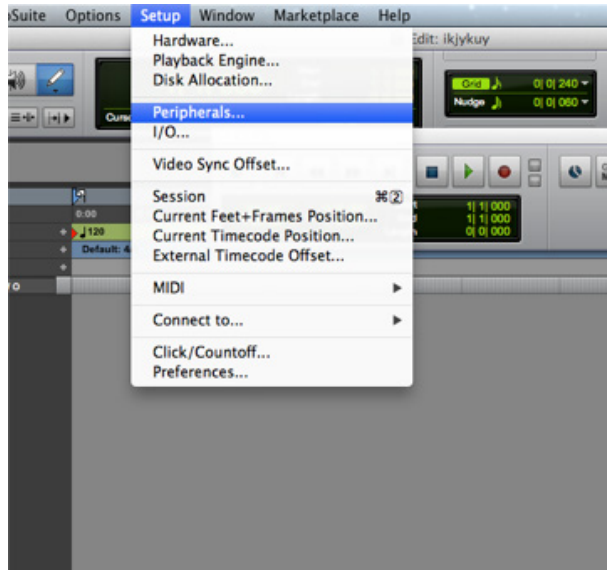
Note : If the clock of your Beatstep pro is slaved by Pro Tools any devices connected to the Beatstep pro will be slaved by Pro Tools too.

2. SET PRO TOOLS AS A MIDI CLOCK SLAVE

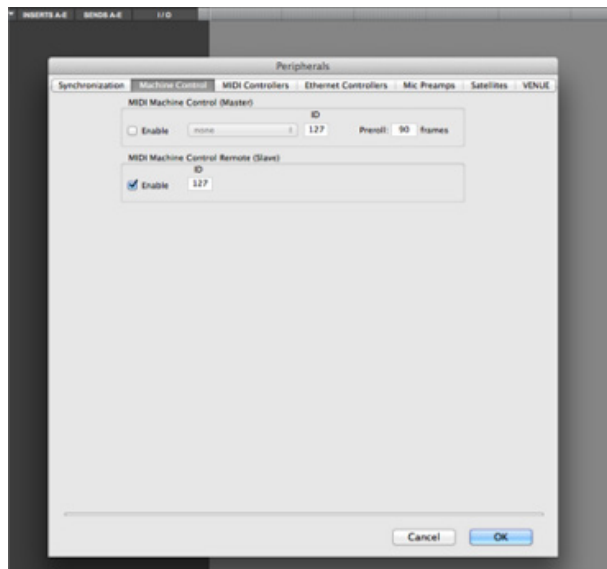
Pro tools support to be a Midi clock slave only with MTC. Beatstep pro doesn't provide this feature.

3. SET UP PRO TOOLS TRANSPORT CONTROL

Open Peripherals window from the Setup menu.



Then in the section Machine Control enable the MIDI Machine Control Remote (Slave)



4. FILTER INPUT MIDICHANNEL

Default MidiChannel used by the BeatStep Pro are different.

Sequencer one send on channel 1

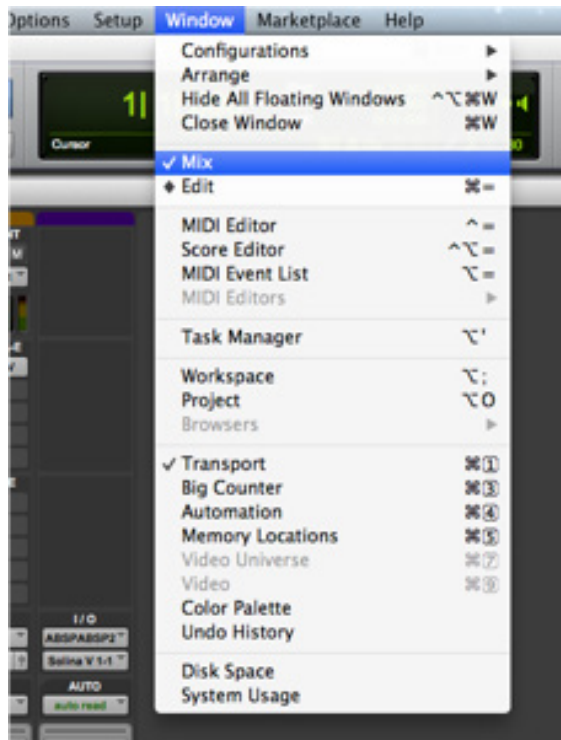
sequencer 2 send on channel 2

Drum sequencer send on channel 10.

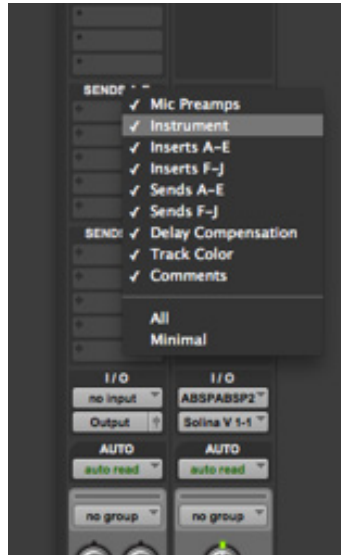
If you want to use only one sequencer on a Midi or Instrument track of Pro Tools you will need to filter Midi channels.

Create a new instrument track and add the Plugin you want to control to the track

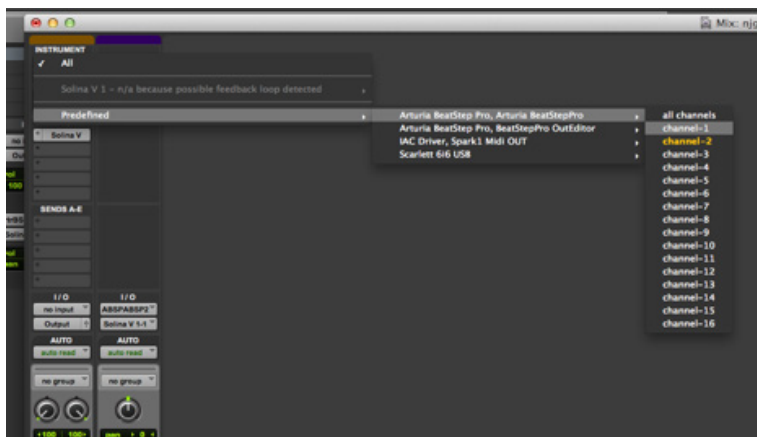
Open mixer windows from windows section



Then right Click on “Sends” and choose “Instrument”



In the first case of the “Instrument” section select the channel from the Beatstep pro you want to use to control your plugin,

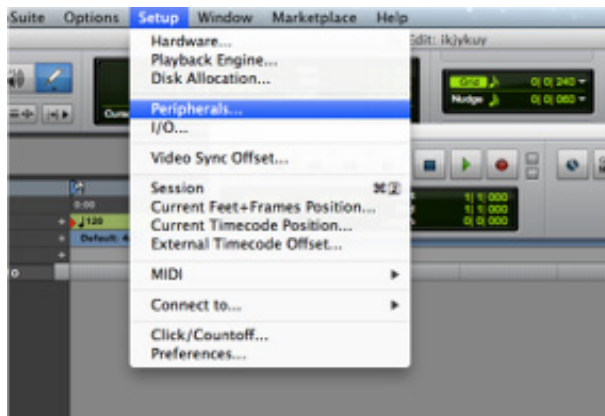


Launch the Midi Control Center and set the MCU/HUI on HUI

(Sysex : FO 00 20 6B 7F 42 02 00 41 0C 01 F7)



Launch Pro Tools and open Peripherals windows in the Setup section



Under MIDI Controller tab, set :

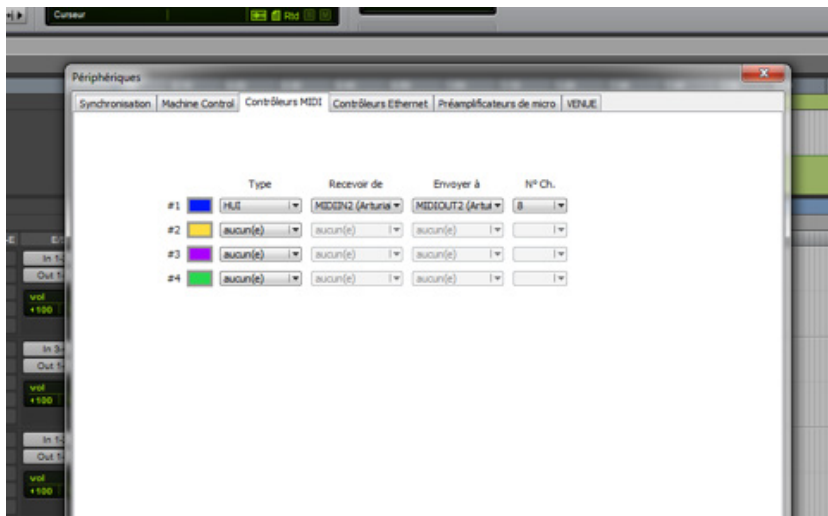
HUI in Type

MIDIIN2 (Arturia Beatstep Pro) in Receive

MIDIOUT2 (Arturia Beatstep Pro) in Send

Then click OK.

Note : If you're on a Mac you should select BeatStepPro OutEditor as Input and BeatStepProInEditor as output.



Use the [<] [>] button to navigate through the different tracks

First Row of knobs is for Panning

Second Row of Knobs is Volume

Impair steps is for mute

Pair steps is for solo