

# BEATSTEP PRO

Controller & Sequencer

## Dear Musician,

**Congratulations** on your purchase of Arturia BeatStep Pro. BeatStep Pro is the combination of a pad/knob MIDI controller and a versatile standalone sequencer.

BeatStep Pro can be configured and used in many different ways. We can not list them all here, but we can try and give you a few examples in this quickstart.

Musically Yours,

The Arturia Team

01 | **ENABLE AUTO-DEMIX BY CHANNEL IF MULTITRACK RECORDING** — p. 02

04 | **SET LOGIC PRO X AS A MIDI CLOCK SLAVE** — p. 07

02 | **BEATSTEP PRO AS A SLAVE IN LOGIC PRO X**  
— p. 03

05 | **MAKIE CONTROL WITH LOGIC X** — p. 07

03 | **SET UP PRO TOOLS TRANSPORT CONTROL**  
— p. 05

## 1. ENABLE AUTO-DEMIX BY CHANNEL IF MULTITRACK RECORDING

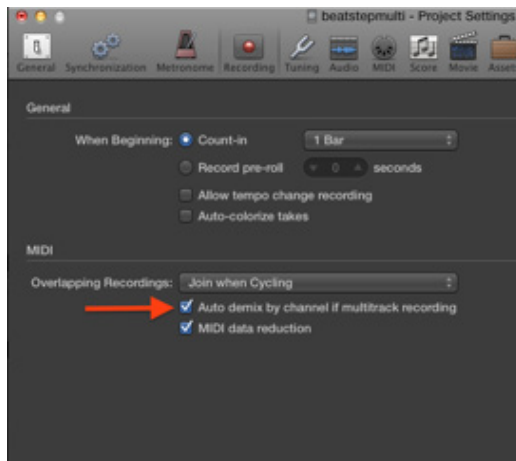
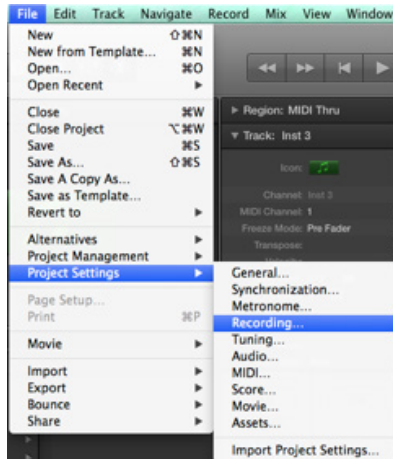
### First Step

#### Setting up Logic X preferences

This will allow the instrument tracks to play only the required sequence instead to play all the midi channel received at the same time.

To do this, Go to File > Project Settings > Recording

And check auto demix by channel if multitrack recording



## Second Step

Once it is done. You have to enable Record on each track that you want to sequence with the beatstep.

And set the Midi channel desired for each track.

Eg:

Synth 1 = Channel 1

Synth 2 = Channel 2

Drum = Channel 10

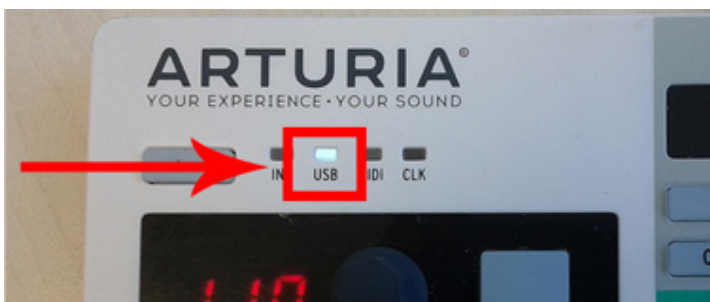


## 2. BEATSTEP PRO AS A SLAVE IN LOGIC PRO X

### First Step

#### Setting up your Beatstep Pro

First, to make sure the Beatstep Pro will play at the same tempo as Logic, and will respond to Start & Stop messages, set the "Sync" mode to "USB".



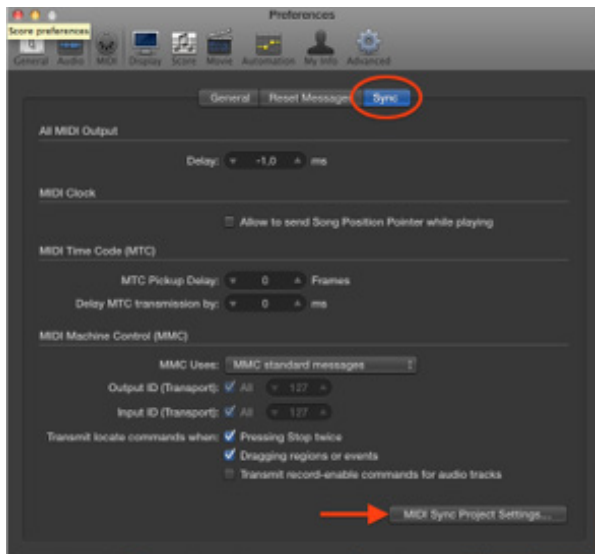
## First Step

### Setting up Logic X preferences

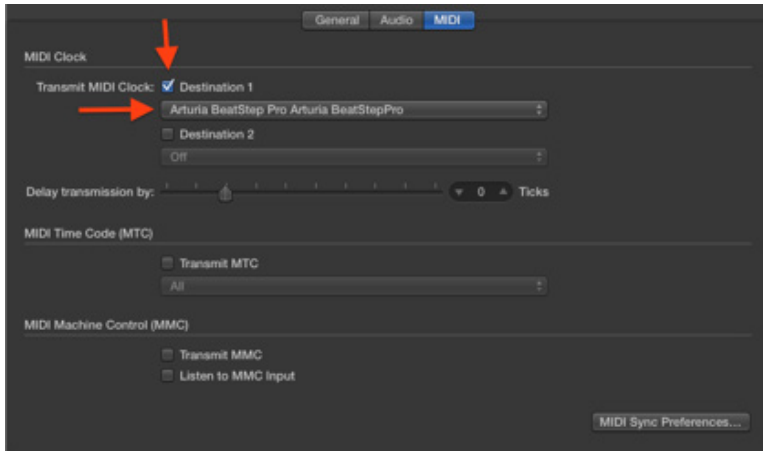
- Go to the preferences section, advanced and check “Show Advanced Tools” and “Midi”



- Then go to the Midi preferences section, then to the Sync tab and click Midi Sync Project Settings



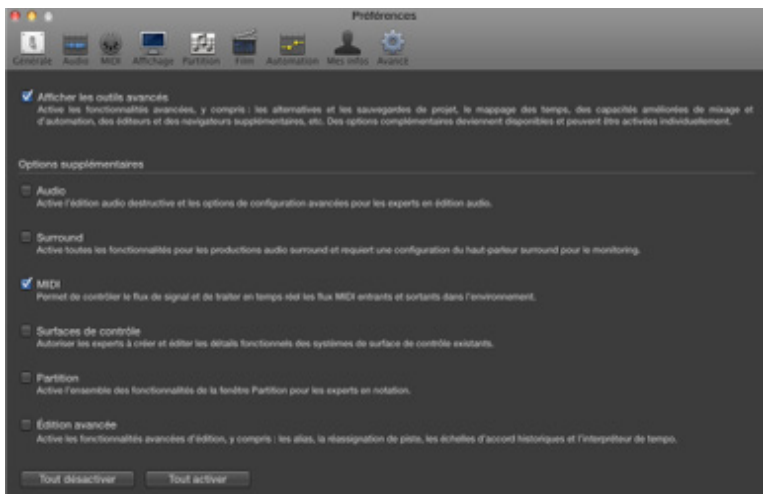
- Finally check Transmit Midi Clock Destination 1 and choose Beatstep Pro



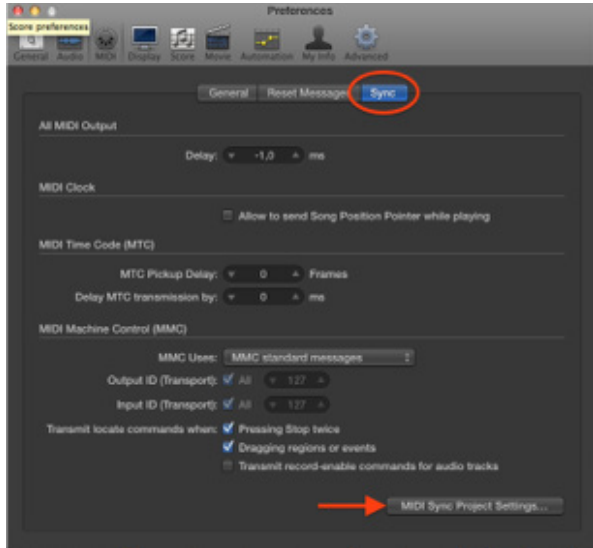
### 3. SET UP LOGIC TRANSPORT CONTROL

Open Logic:

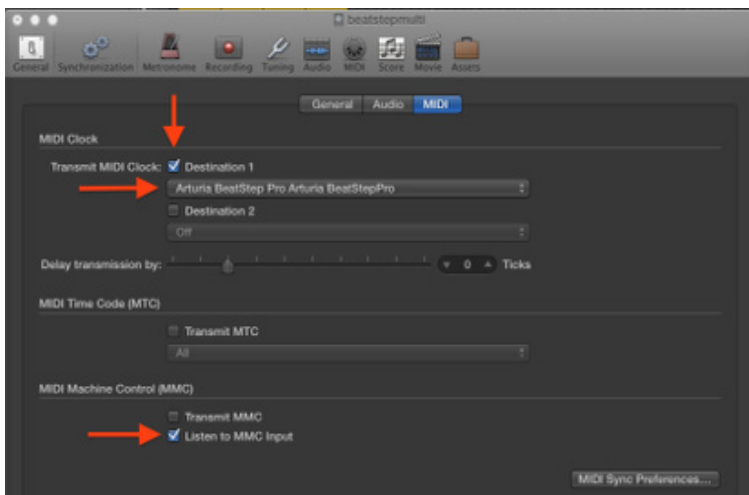
- Go to the preferences section, advanced and check "Show Advanced Tools" and "Midi"



Then go to the Midi preferences section, then to the Sync tab and click Midi Sync Project Settings



Finally check Transmit Midi Clock Destination 1 and choose Beatstep Pro, and check Listen to MMC Input in Midi Machine Control

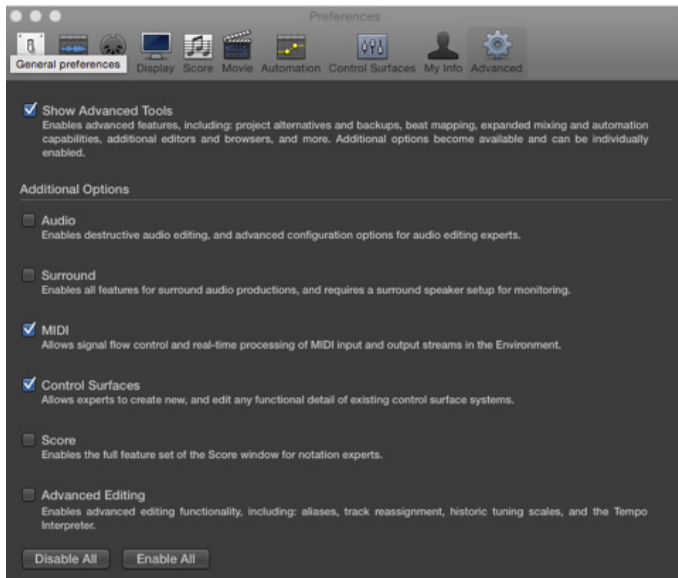


## 4. SET LOGIC PRO X AS A MIDI CLOCK

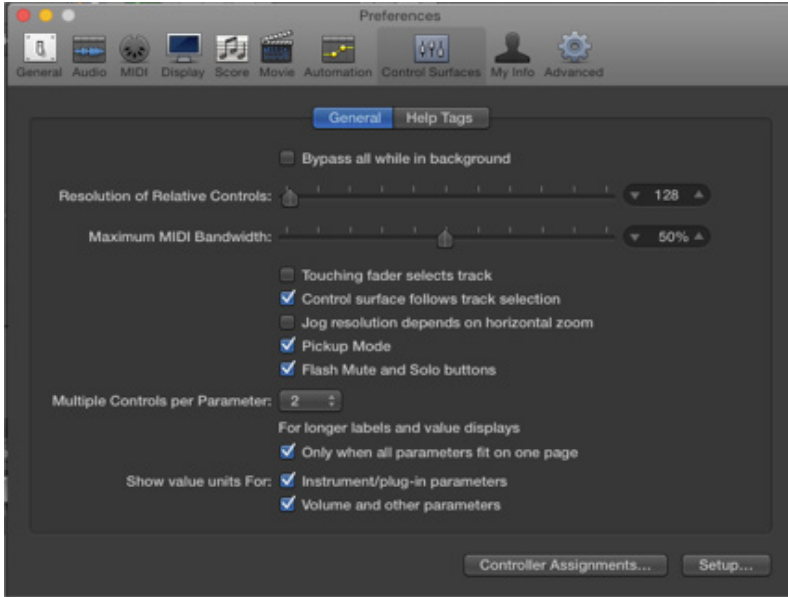
Since Logic Pro 8, it is not possible to set Logic as a Midi clock slave.

## 5. MAKIE CONTROL WITH LOGIC X

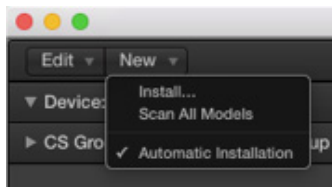
In order to use the BeatStepPro as a Mackie Controller you first need to enable Control Surface in Advanced tab in the Preferences panel.



Then go to Control Surfaces panel and click “setup”



In the setup window click on New then on install in order to add a new control surface.





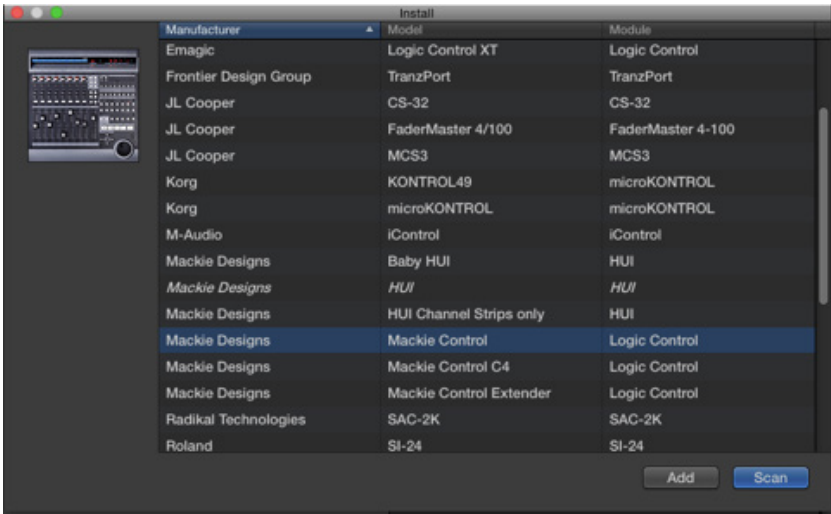
Choose

Manufacturer > Mackie Designs

Model > Mackie Control

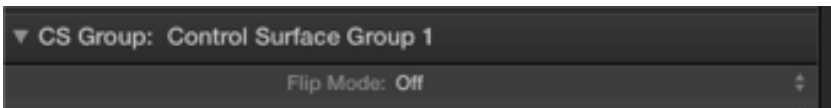
Module > Logic Control

Then click “add” to validate your choice.



Then simply have to select BeatStepProInEditor as Output Port and BeatStepPro OutEditor as Input Port.

Check in the “CS Group: Control Surface Group 1” the Flip Mode option. This option should be on OFF. If it’s on duplicate all your knobs will send only pan parameters.



Of course don’t forget to enable the MCU/HUI mode on your BeatStepPro when you’re on control mode !

Voilà !